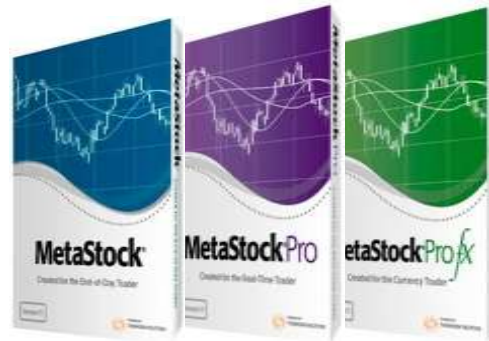




An Introduction to MetaStock 11



MetaStock
science for traders

GreenByte
Telematica Finanziaria

Rivenditore ufficiale in Italia:
Green Byte Telematica Finanziaria
Via Maiolo 68 – 00132 Roma
Tel. 06.2203632 – Mob. 348.7039210
Email: Info@greenbyte.it – <http://www.greenbyte.it>

POWERED BY
THOMSON REUTERS

Disclaimer

This demonstration is designed to instruct you on using MetaStock and accompanying software plug-ins and are not a recommendation to buy or sell, but rather guidelines to interpreting and using the specific indicators and features within the software. The information, software, and techniques presented today should only be used by investors who are aware of the risk inherent in trading. Equis shall have no liability for any investment decisions based on the use of their software, any trading strategies or any information provided in connection with the company.

MetaStock 11 Features

- 6 New Brand Named System
- 43 New Adaptive Indicators
- 6 RMO Alerts
- 2 New Stops
- 17 New Indicators
- 4 New FOREX systems
- MetaStock Fundamental Analyzer*

MetaStock 11 – 6 New Name Brand Systems

- Stochastic Pops – Combines a weekly and daily stochastic indicator to help avoid whipsaws. Also uses above average volume and DMI.
- Conners RSI – 2 period RSI at extreme highs or lows is used to trigger both entry and short entry. Exits are based on the Intellistops indicators.
- Darvas Box – Uses extreme high and lows to form dynamic support and resistance levels. The indicators appear as a box.
- Turtle Trader – Well known system that triggers buy alerts when the price moves above the highest high of the last 20 days. Short signals are generated when the price moves below the lowest low of the last 20 days. Positions are closed when prices reach the extremes of the previous 10 days.
- SPYDER Carpe Diem – Used to measure a single day movement on the SPY. Uses a 4 bar system. For a long position: white, white, black, white and for a short position: black, black, white, black.
- 1st Hour Breakout – This system looks at the first hour of trading. It works off the basis that the first hour sets the tone for the rest of the trading day. The system will always exit at the end of the trading day.

MetaStock 11 – 17 New Indicators

MetaStock has always incorporated a very robust list of built-in indicators -- in excess of 150 and counting. The addition of these new time tested indicators give the user more choices in their trading arsenal.

- Coppock Curve
- Darvas Box High
- Darvas Box Low
- Denvelopes
- Donchian Channels
- Elder Ray
- Fisher Transformation
- Gann Swing Bands
- Inverse Fisher Transformation of RSI
- Natenberg's Volatility
- Polarized Fractal Efficiency
- Pring KST (short, intermediate, and long-term)
- Stochastic RSI
- Force Index
- Turtle Trader Bands

MetaStock 11 – 43 New Adaptive Indicators

Standard indicators use a fixed look back period, which makes them less responsive to prevailing market conditions.

MetaStock 11 incorporates 43 NEW Adaptive Indicators with dynamic look-back functionality based on volatility, cycle, or a combination of both. This method provides the most responsive and accurate results.

- MS11 - Adaptive Aroon
- MS11 - Adaptive Average Directional Movement
- MS11 - Adaptive Average True Range
- MS11 - Adaptive CCI
- MS11 - Adaptive Chaikin Money Flow
- MS11 - Adaptive Chande Momentum Oscillator
- MS11 - Adaptive Detrended Price Oscillator
- MS11 - Adaptive Directional Movement +/- DI
- MS11 - Adaptive Directional Movement Index
- MS11 - Adaptive Directional Movement Rating
- MS11 - Adaptive Ease of Movement
- MS11 - Adaptive Inertia
- MS11 - Adaptive Intraday Momentum Index
- MS11 - Adaptive Linear Regression Indicator
- MS11 - Adaptive Linear Regression Slope
- MS11 - Adaptive MACD
- MS11 - Adaptive Mass Index
- MS11 - Adaptive Mesa Sine Wave
- MS11 - Adaptive Money Flow Index
- MS11 - Adaptive Moving Average Exponential
- MS11 - Adaptive Moving Average Simple
- MS11 - Adaptive Moving Average Weighted
- MS11 - Adaptive Polarized Fractal Efficiency
- MS11 - Adaptive Price Oscillator
- MS11 - Adaptive Price Rate-of-Change
- MS11 - Adaptive Projection Bands
- MS11 - Adaptive Projection Oscillator
- MS11 - Adaptive QStick
- MS11 - Adaptive r-Squared
- MS11 - Adaptive Range Indicator
- MS11 - Adaptive Relative Momentum Index
- MS11 - Adaptive Relative Strength Index
- MS11 - Adaptive Relative Volatility Index
- MS11 - Adaptive Standard Deviation
- MS11 - Adaptive Standard Error
- MS11 - Adaptive TEMA
- MS11 - Adaptive Time Series Forecast
- MS11 - Adaptive TRIX
- MS11 - Adaptive Ultimate Oscillator

MetaStock 11 – 43 New Adaptive Indicators

Volatility Method:

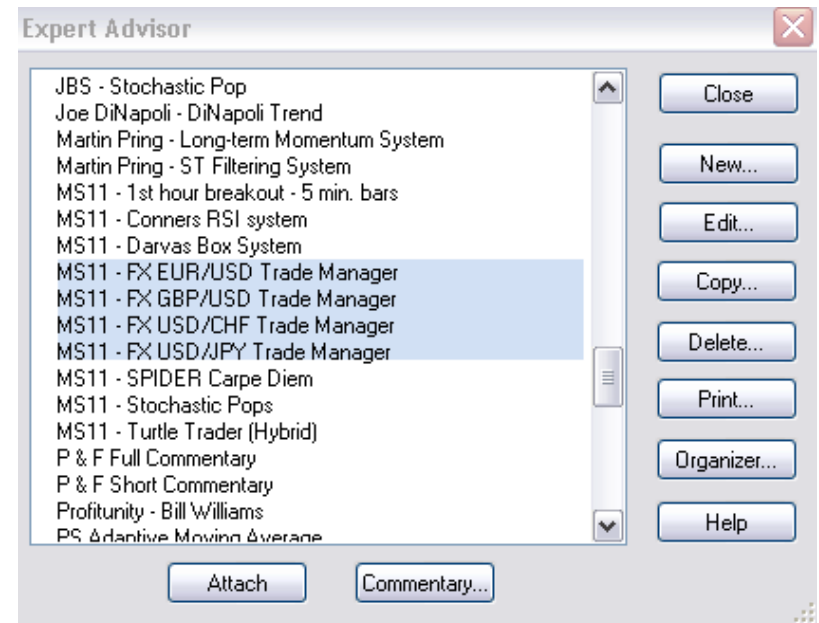
The volatility method used a normalized Standard Error to calculate volatility. The higher the volatility the shorter the look back period fed into the indicator calculation.

Cycle Method:

The cycle method of adjustment uses the average number of bars between peaks and troughs to arrive at the look back value. As the cycle length increases and decreases the number of look back periods adjusts to half the average length.

MetaStock 11 – 4 New FOREX systems

MetaStock employed the "3-V" approach (Velocity, Verticality, and Volatility) and the notion that balance between different types of indicators offers superior performance to develop the FOREX Currency Pair Systems. The pairs include EUR/USD, GBP/USD, USD/CHF and USD/JPY. Each System uses its own unique indicators to define the system. This is shown in the Expert Commentary.



MetaStock 11 – 2 New Stop Indicators

The best trading systems will fall short without a good exit strategy. MetaStock 11 Provides 2 NEW stops to help your system know when it's time to get out of the trade.

- Intellistops -- these self-adjusting trailing stops do away with the old static stop systems, which are set at a fixed percentage from price. Intellistops are adaptive and adjust dynamically based on the current price activity of the security. Intellistops adjust according to cycles, volatility, and other conditions.
- Chandelier Stops -- As the name indicates, Chandelier Stops "hang" the sell stop from the extreme high reached over a predetermined period. When used properly, in tandem with other trading systems, Chandelier Stops have been shown to produce profits even with randomly selected entries on a diversified group of futures.

MetaStock 11 – The Fundamental Analyzer

MetaStock Fundamental Analyzer includes 5 powerful sections:

- Fundamental Tab – View at a glance the exchange, Industry Sector, Market Cap, Avg. 21-Day Volume, 52-Week High and Low and much, much more.
- Revenue Tab – Divided into two sections, this tab shows Quarterly and Annual Net Income Compared to Revenue including: Revenue, Net Income, and Percent fields for the last 8 quarters or 4 years.
- Performance Tab – Displays Annual earnings per share, Annual Dividends, Annual Growth Rate, and Percent Changes to S&P 500 over a variety of periods.
- Estimates Tab – Displays EPS Quarterly Estimates and Total Revenue Quarterly Estimates going out 4 quarters, as well as EPS Annual Estimates and Total Revenue Annual Estimates going out 4 years.
- Scanner Tab – perhaps the most unique feature of the MetaStock Fundamental Analyzer, this powerful tool allows you to search for companies based on a variety of fundamental criteria including: Minimum Price, Maximum Price, Minimum Average Volume, Minimum EPS, Minimum PE Ratio, Minimum Dividend Yield, and Minimum Beta. The results can then be sorted by Closing Price, Average Volume, EPS, Annual Dividend, PE Ratio, Beta, Company Name, Group, and Sector. You can even scan a list you created from the MetaStock Explorer and vice versa – it's a great way to create a technical analysis/fundamental analysis workflow.

MetaStock 11 – Unleash the Power of MetaStock

Understanding the Rahul Mohindar Oscillator (The RMO)
Fibonacci Trading Method
Trading the SPY with the “SPYDER Carpe Diem System”
Trading FOREX with the ICE Powered Systems
Building your own MetaStock System
Trading with Volume
Building a Candlestick Pattern Scanner
Adding the Power of Fundamentals

